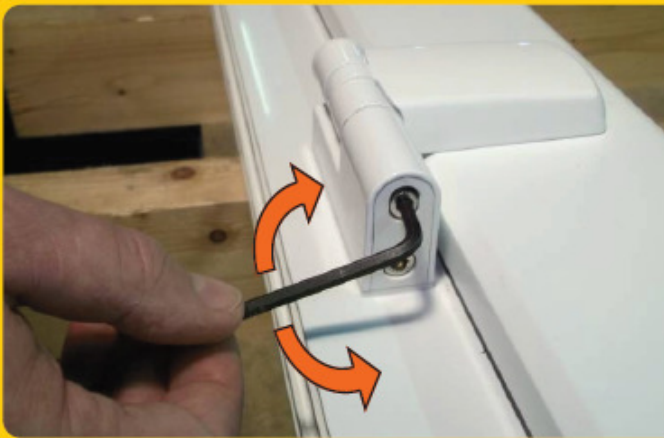




Flag Hinge Adjustment Guide

All of our doors are fitted with the Trojan Patriot Plus 3D adjustable hinge as standard, please follow the diagrams below on how to adjust the hinges.

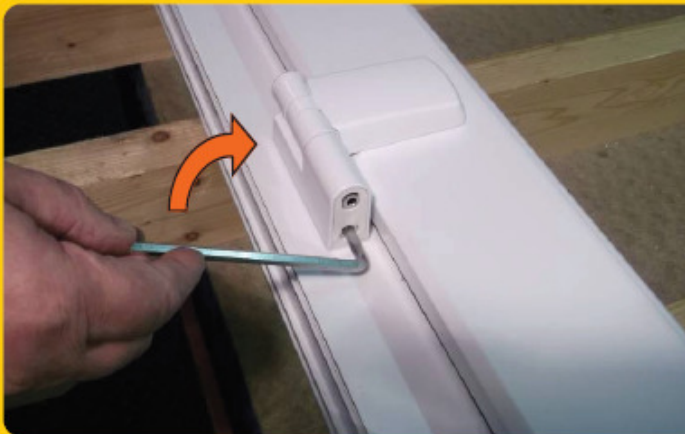


Compression Adjustment

+/- 1.5mm

4mm Allen Key

Rotate the Allen Key Clockwise or Anti-Clockwise to give the required compression setting
Ensure compression is evenly distributed across all hinges
Note: In rotation positive "click" positions are felt - (2 in each direction from the central position)

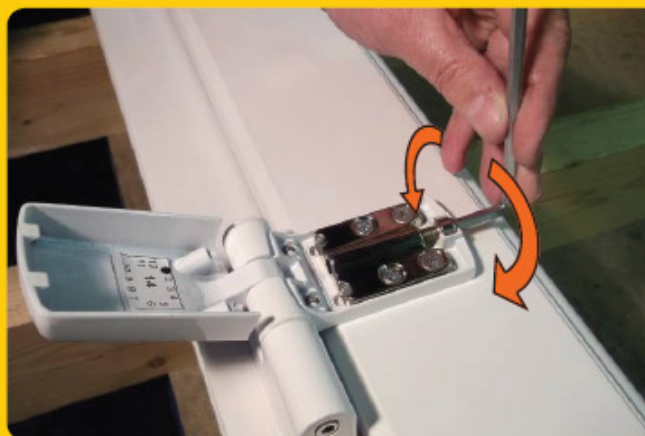


Height Adjustment

+ 8mm
- 0

5mm Allen Key

Rotate the Allen Key Clockwise give the required height setting
Ensure that the weight of the door is evenly distributed across all hinges



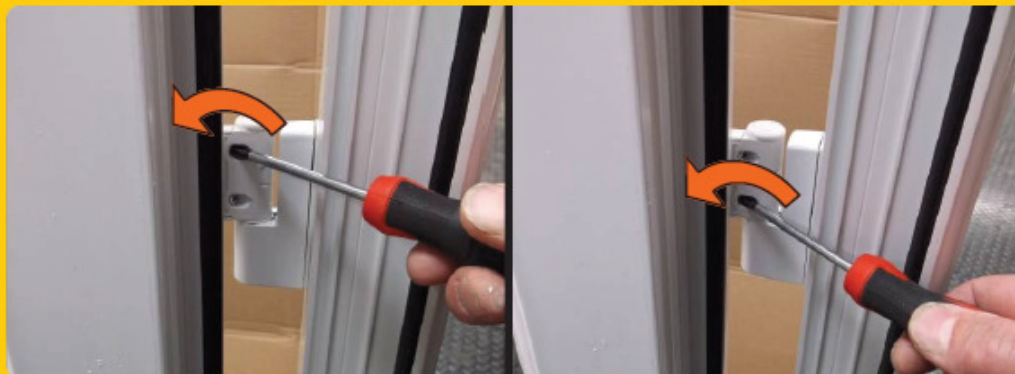
Lateral Adjustment

+/- 6mm

5mm Allen Key

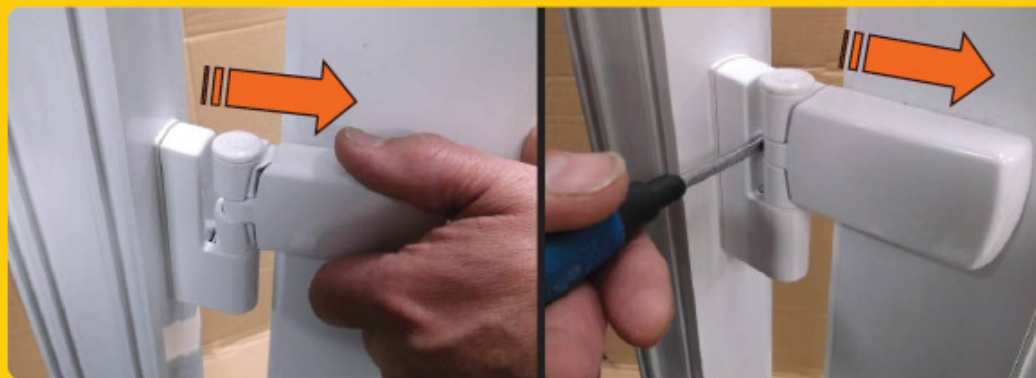
Rotate the Allen Key Clockwise or Anti-Clockwise to give the required lateral setting
Ensure even distributed across all hinges

Removing the Door



1
Undo Cover
Screws

Open the door to access the Cover Retaining Screws. These are self retaining screws therefore to release the cover the screws must be completely unscrewed however the screws do not come out



2
Clip and Slide
Cover

Pull the cover out towards the centre of the door. On release a click will be heard. If the cover does not open by hand a screw driver can be used behind the knuckle to gently assist opening. Repeat stages 1 and 2



3
Lift Door

Removing the Hinge Body



1
**Insert Screw
Driver into spring
release slot**

Insert a flat end screw driver into the slot found behind the pivot pin. The screw driver must be inserted under the leaf spring in order to lift the leaf spring up (i.e. away from the door frame)



2
**Insert 4mm Allen
Key into hex on
end of Pivot Pin**

Insert a 4mm Allen Key into the Hex Slot in the bottom of the Pivot Pin. Ensuring that the Screw Driver remains in place, tap the Allen Key into the Pin until the Hinge Body starts to slide off the Frame Mount



3
**Slide Body of
Frame Mount**

Once the Hinge Body starts to separate from the Frame Mount it will slide off easily